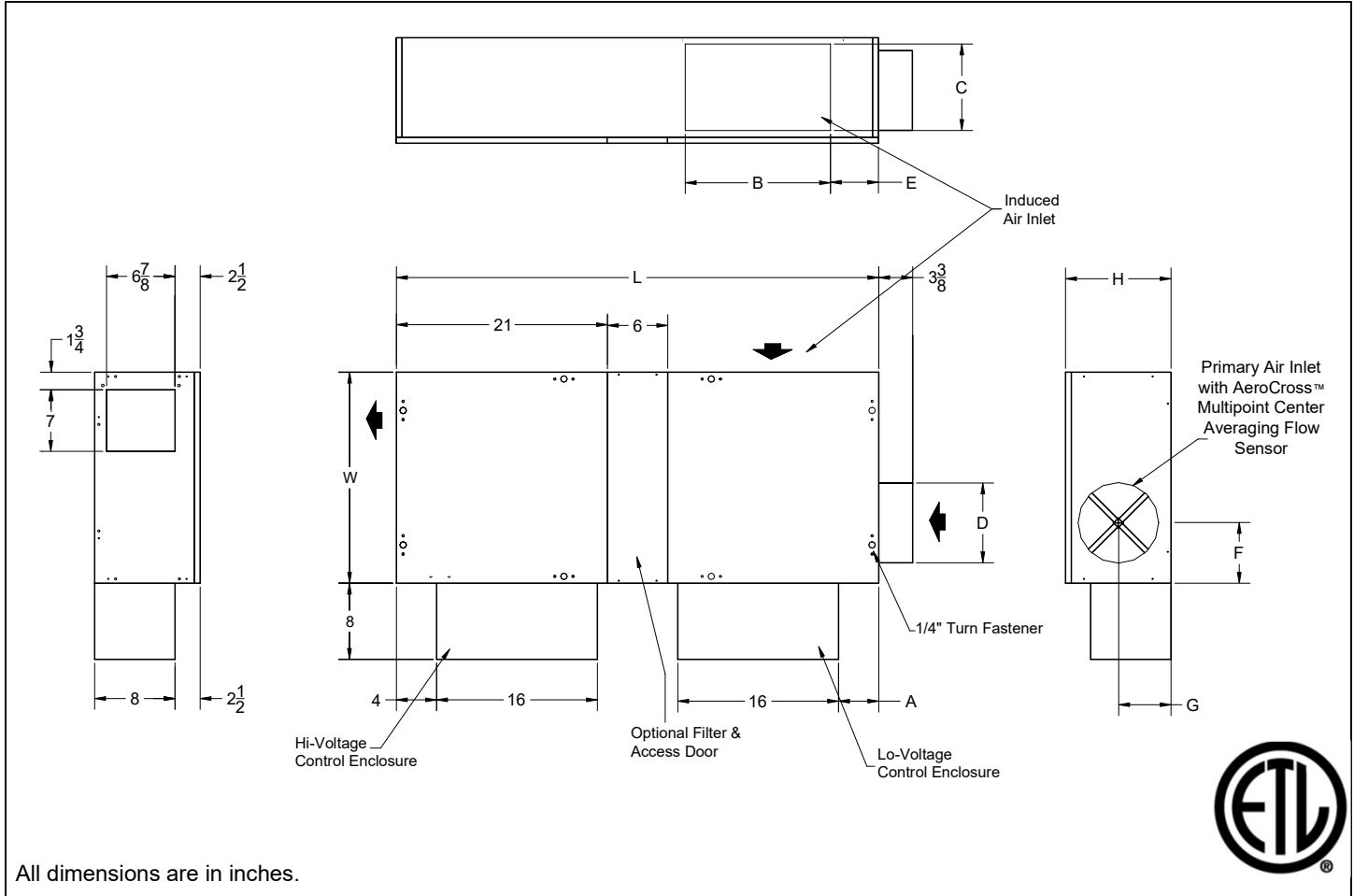


ALHK

Fan Powered Terminal, Series Flow with ECM Motor
 Analog Control, Pressure Independent, Access Floor Profile



All dimensions are in inches.

Unit Size	Inlet Size	A	B	C	D	E	F	G	H	L	W	Filter Size
3	9" Diameter	5	14	8	8 7/8	3 1/2	5 5/8	7	10 1/2	48	21	18 x 10
4	9" Diameter	5	14	12	8 7/8	3	5 5/8	7	14 1/8	48	21	18 x 14
	10" Diameter				9 7/8		6 5/8					

ECM Motor Amperage Ratings

Unit Size	Motor hp	120V/1/60 FLA	208V/1/60 FLA	277V/1/60 FLA
3	1/3	5.0	2.8	2.6
4	1/3	5.0	2.8	2.6

FLA = Full Load Amperage, rated per the motor nameplate

All fan motors are single phase, same voltage as electric coil (when supplied), with exception that 277 V motors are used with 480V, 3 phase coils (4 wire wye).

Accessories (Optional)

Check if provided.

- Induced Air Filter, 1" thick, disposable construction type.
- Toggle disconnect switch (not available on units with optional electric coils.)
- Fibre Free Liner
- 1/2" Fibre Free Liner
- 1/2" EcoShield Liner
- Foil Face Liner
- Fan unit fusing
-

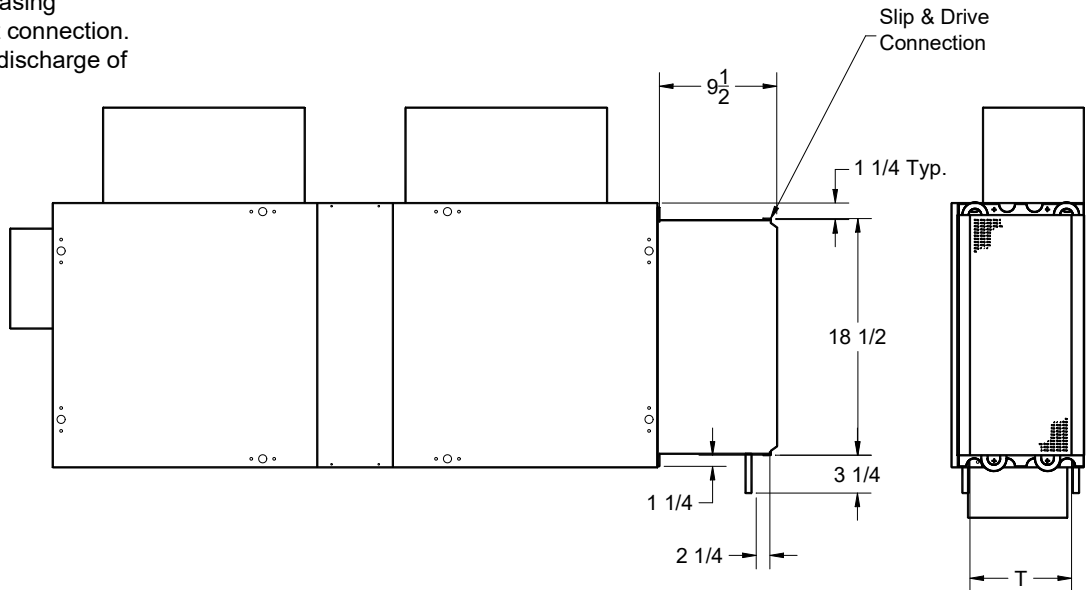
Accessories (Optional)

Hot Water Coil Section

- 1/2" copper tubes
- Aluminum ripple fins, 10 per inch
- Connections: Male solder, 1/2" for 1-row and 7/8" for 2-row. Left or right hand connections.
- Galvanized steel casing
- Slip and drive duct connection.
- Coil is installed at discharge of unit.

- 1 Row
 2 Row

Unit Size	T
3	10
4	10



Electric Coil Section

Standard Features

- Automatic reset thermal cutouts, one per element
- Single point electrical connection for entire unit
- Positive pressure flow switch
- Transformer

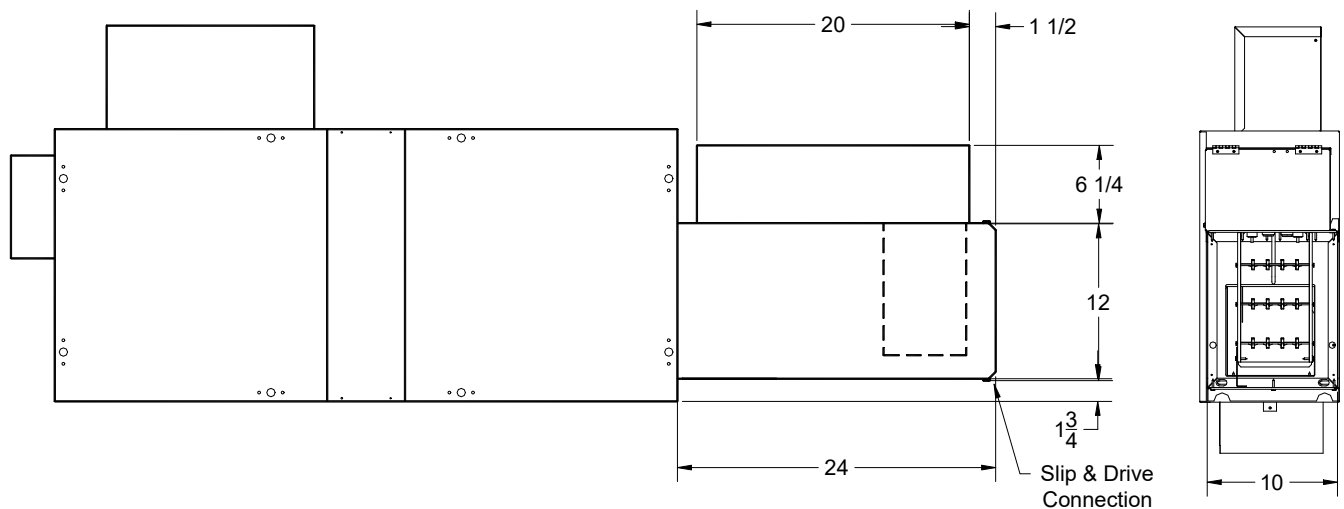
Options

- Fuse Block
- Disconnect switch, door interlock type
- Manual reset cutout
- Dust tight construction

Supply Voltage

- 208V, 1 ph, 60Hz
- 240V, 1 ph, 60Hz
- 277V, 1 ph, 60Hz
- 208V, 3 ph, 60Hz
- 480V, 3 ph, 60Hz *

*4 wire wye only



General Description

- The LHK fan powered terminal is designed to be installed in the underfloor plenum of an access floor grid system.
- 20 gauge steel casing.
- Ultra high efficiency, brushless DC ECM motor with a unique microprocessor based motor controller.
- Manual PWM controller allows simple screwdriver adjustment of fan speed.
- Efficiencies of up to 70% across the entire operating range.
- Provides a large turndown ratio
- Constant volume regardless of changes in downstream static pressure allows for factory setting of cfm.
- Dual density insulation, coated to prevent air erosion, meet requirements of NFPA 90A and UL 181.
- Pressure independent primary flow control.
- Multipoint, center averaging velocity sensor.
- Top access panels can be removed for service of damper, blower, or filter sections.
- Primary air flow balancing connections.
- Single point electrical connections.
- Rectangular discharge opening is designed for flanged duct connections for units without heating.
- Electronic proportional room thermostat with adjustable setpoints for temperature and airflow is included with unit.
- Minimum and maximum airflow adjustments are made at the thermostat, using a digital voltmeter.

This submittal is meant to demonstrate general dimensions of this product. The drawings are not meant to detail every aspect of the product. Drawings are not to scale. Titus reserves the right to make changes without written notice.